

## Load cells

### Shear beam load cells

65023



Engineered for the weighing of hoppers and reservoirs and for the construction of platforms of low profile

OIML 3000 div approved

Avoid the use of mechanical restraints when used with its mounting accessories

Excellent linearity and precision

Resistance up to 100% of the static side load

Made of plated steel and stainless steel

Watertight protection for use in harsh environments

Also available in special versions for high temperature

#### TECHNICAL CHARACTERISTICS 65023

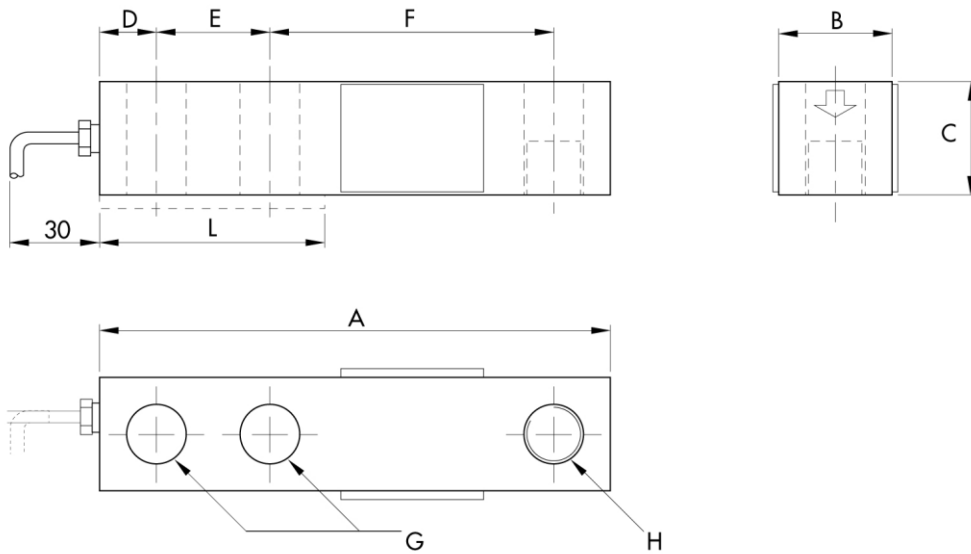
Rated load (R.L.):	125, 250, 500, 750, 1000, 1500, 2000, 3000, 5000 Kg
Combined error:	±0.02% of R.O
Repeatability	±0.01 % of R.O.
Creep (20 minutes):	±0.017% of R.O.
Safe overload:	150% of R.L
Ultimate overload:	300% of R.L.
Recommended input:	5÷15 Vcc/ca
Input resistance:	343÷357 Ohms
Output resistance:	349÷355 Ohms
Insulation resistance:	> 1000 M Ohms
Rated output (R.O.):	3 ± 0.25 mV/V
Zero balance:	1% of R.O.
Temperature range:	-18 ÷ +65°C
Compensated temperature range:	-10 ÷ +40°C
Temp. effect on zero balance:	±0.018% of R.O./10°C
Temp. effect on output:	±0.012% of output/10°C
Max load deflection	0.33÷0.89 mm
Degree of protection:	IP67
Material:	Nicked steel, Stainless steel
Electrical connection:	4 conductors shielded cable; length 6 m
Precision class:	3000 n. OIML only for carrying capacity from 500 to 5000 kg
Clamping force without any load:	125÷2000 kg : 136 Nm 3000÷5000kg : 205 Nm



## Load cells

Shear beam load cells

65023



Electrical Connections	
+Excitation	Red
-Excitation	Black
+Signal	Green
-Signal	White
Shield	Cable Shield

CAPACITY kg	125-250	500-2000	5000
A	130	130	171.5
B	31	31	38.1
C	25.4	31	38.1
D	15.8	15.8	19.1
E	25.4	25.4	38.1
F	76.2	76.2	95.3
G	13.5	13.5	20.6
H	M12x1.75	M12x1.75	M20x2.5
L	57	57	76